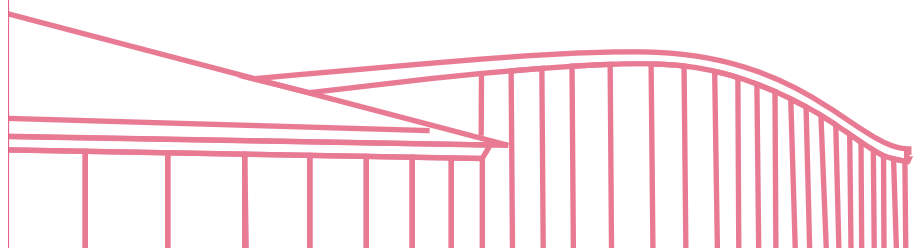
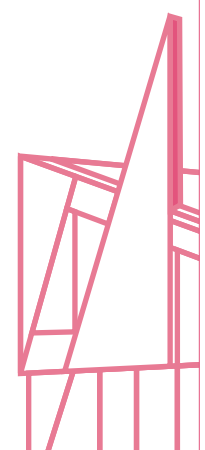


tile it right⁺

brooke⁺

your guide to
tiles + tiling



www.tile.co.uk



introduction

Ceramic tiles have been used since biblical times; they are hard wearing, easy to clean, water resistant, hygienic and very attractive.

Even experienced DIY people used to cringe at the thought of applying tiles, but the advent of modern tile cutting tools and adhesives now make the job easy.

We hope that this simple, step-by-step guide written by our resident experts will give the inexperienced the courage to tackle the job and give those with more confidence some tips to avoid common mistakes.

If you read this booklet carefully, use the correct tools and take your time, you should quickly be able to achieve professional tiling standards.

Remember - if you have any problems planning or laying your Brooke tiles, our resident experts are always here to help.

how many tiles do i need?

The easiest method is to choose your tile, check the tile's dimensions and simply work out how many tiles fit into the areas to be tiled, counting cuts as full tiles. If you have any doubt, buy more than you need and return your unused tiles within 28 days for a full refund.

Note: this offer applies to all ceramic tiles in stock, except natural stones and special orders.

what tools do i need?

Tile cutter
Notched trowel or spreader
Grouting float or squeegee
Spacers
Spirit level / plumb line
Measuring tape
25x50mm (2" x 1") battens for marking out tiles
Pincers for nipping off the edges
Pencil for marking out
Tile file

Tile edge trims (as necessary)
Grouting sponge
Grout finisher
Bath or worktop seal (as necessary)
Knee pads (for flooring)
Eye protection & gloves (for glass tiles)
Priming or bonding agent (as necessary)
Tile saw
Silicone sealant

preparation

Planning ahead is essential for a good result. You should start with a perfectly level surface for tiling. Do not cut corners - preparing the surface is vital. The surface should be true, dry, rigid, sound, clean and free from salts, grease, dust and any contamination which may prevent adhesion. The best tiling jobs have a mirror-like flatness where the tiles are square, evenly spaced and have no narrow cuts.

check your tiles

Brooke Ceramics only buy 1st quality tiles from factories we know and trust. Before starting, you should always check your measurements to ensure that you have enough tiles to complete the job. Brooke Ceramics will happily exchange or refund within, 28 days of purchase, any tiles which disappoint for whatever reason if they have not been fixed. We will not, however, accept any responsibility for shade variation or other noticeable defects after fixing.

adhesive

There are many different types of adhesive available. It is important that you use the correct adhesive & grout for your installation. Always read and follow the manufacturer's instructions.

characteristics of ceramic tiles

GLAZED OR UNGLAZED

Glazed tiles have a surface that is covered by a layer of coloured glaze. This glaze gives the tile important design characteristics such as colour, shininess, pattern, shading, etc., as well as technical properties such as hardness, slip resistance, etc. Unglazed tiles, on the other hand, tend to be perfectly uniform in surface and thickness and usually have little decoration or pattern.

'RED' OR 'WHITE' CLAY BODY

Depending on the clay used, the body of the tile can be various shades of red or brown ("red body") or whitish ("white body"). For certain unglazed tiles, mainly 'porcelain', different colours are obtained by adding coloured pigments to the clay before firing.

WITH A 'COMPACT' OR 'POROUS' BODY

The body of the tile can be totally impervious to any water absorption or there can be tiny pores in the body of the tile which can absorb small amounts of water. Most wall & floor tiles are very slightly porous and care should be taken if using these tiles outside. The more modern 'porcelain' floor tiles (see below) are totally impervious to water absorption.

'PORCELAIN'

'Porcelain' tiles are totally impervious, highly compact, glazed or unglazed floor tiles. They are totally frost proof and have a higher impact resistance than normal floor tiles. The name comes from the Italian 'Gres Porcellanato' and has nothing to do with porcelain pottery.

MOSAIC

Small pieces of ceramic tile or glass usually sold in sheets on a mesh backing for ease of fixing. When fixing most mosaics, use a 3mm notched trowel.

GLASS TILES

Made from solid glass without a clay biscuit. When fixing, glass tiles should be 'buttered' to form a solid bed of adhesive. Always use protective goggles and gloves when cutting and handling glass tiles.

SLATE, MARBLE & NATURAL STONE

These products vary enormously in wearability. Some are extremely hard and others quite soft; most need sealing or polishing and can vary a great deal in colour, thickness & flatness.

SHADING

All tiles can vary slightly in shading, even within the same batch. Check your tiles before fixing and use 3 or 4 boxes at a time to blend the colours.

DIMENSION & APPEARANCE

There may be small variations in the size and flatness of ceramic tiles of the same batch. Although now quite rare, we still recommend using spacers to compensate for any such variations.

CHEMICAL & STAIN RESISTANCE

Most glazed tiles are resistant to household chemicals and domestic stains. For commercial use, please check the technical characteristics for your desired tile. Care should be taken when selecting unglazed tiles for use in areas of potential heavy staining such as kitchens.

CRAZING

Crazing appears as hairline cracks under the surface of the glaze. Although mainly a thing of the past, crazing can still occur in certain situations. Lead-based or deep glaze colours tend to be more prone to crazing, but movement, heat & cold and thickness of adhesive can also be factors. As such, no glazed tile is guaranteed against crazing.

QUALITY

All tiles are subject to stringent quality control after production to ensure that they meet the highest standards. Brooke Ceramics Ltd only buy 1st quality tiles from factories whom we know and trust. Tile manufacture is mostly of a very high standard, but all tiles should still be checked for any defects before tiling begins.



wall tiling

All surfaces must be clean, sound and dry.

NEW PLASTER WALLS

New plaster should be thoroughly dry before tiling. You should also ensure the background is totally dry. Prime with PVA or Acrylic Primer.

EXISTING PLASTER

Tiles can be applied directly onto Cement-Sand rendering without the need for plastering. Ensure that the walls have completely dried out before tiling. Prime with PVA or Acrylic Primer.

CEMENT-SAND RENDERING

Tiles can be applied directly onto Cement-Sand rendering without the need for plastering. Ensure that the walls have completely dried out before tiling. Prime with PVA or Acrylic Primer.

PLASTERBOARD

Plasterboard is suitable for wall tiling provided it is minimum 12.5 mm thick and well supported. Prime with PVA or Acrylic Primer.

PAINTED SURFACES

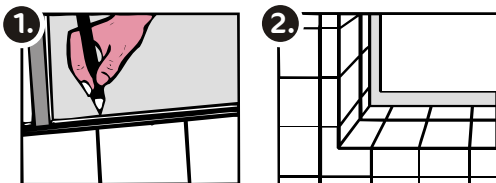
Hard gloss paint is usually a satisfactory base for tiling if well bonded, but any flaking paint should be removed and the surface cleaned. Score the surface, fill in old cracks and voids with filler and allow to dry thoroughly. Prime with PVA or Acrylic Primer. Emulsion paint can break down after tiling and should be mechanically removed prior to tiling. Then prime with PVA or Acrylic Primer.

EXISTING TILES

Ensure the old tiles are thoroughly cleaned & well bonded and then score the surface. Tile in the usual manner but allow adhesive to dry for at least three days before grouting.

SETTING OUT

Along a length of timber (see fig. 1) mark the tile widths to help you identify where the tile will start and finish, remembering to leave gaps for the spacers. Set out horizontal position of the tiles so that the same size cuts are made either side of windows etc. Avoid small, difficult cuts. (see fig. 2) Plan each wall carefully, remembering that any patterns/designs will need to be matched in the corners of the room.



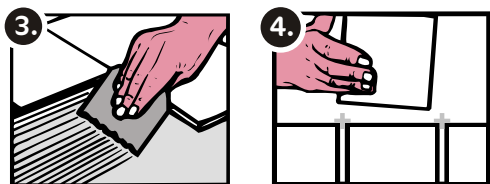
off you go...

1. Find the lowest point of the base you are working to (skirting, bath top, work surface etc.) with a spirit level. Place a tile against the lowest point and draw a horizontal line on the wall along the top. Measure from this line to the top and bottom of the wall and ensure that there are no narrow cuts. Consider the position of any border(s). Adjust the line if necessary.

2. Nail the batten along the wall on this line. Use the spirit level to ensure it is horizontal. The first line of tiles will rest on this batten.

3. Similarly nail a batten vertically at one end - one tile width away from the edge of the wall or simply mark a vertical line with a level or plumb line.

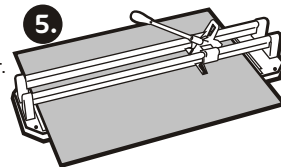
4. Spread the wall tile adhesive using a notched trowel or spreader onto the wall (see fig. 3). Work in areas of about 1 sq. metre at a time, so that tiles are fixed before the adhesive surface can form a skin. Press and twist the wall tiles into the adhesive, starting at the bottom and working upwards, (see fig. 4) one row of whole tiles at a time, using spacers (if required) to ensure a uniform joint. Check the horizontal and vertical lines with the spirit level every few rows.



5. Remove surplus adhesive from tile surfaces and from joints. When the adhesive has set, remove the batten and complete the tiling.

6. For straight cuts, a combination tile cutting/snapping machine produces the best results.

- Place the tile, glazed side up in the cutter (see fig. 5).
- Hold the tile firmly and score once only, ensuring a good start and finish.



- Align the score with the centre of the snapper.

- Press the handle firmly and the tile should snap along the score.

7. Use a tile file to remove any rough edges. Curves and odd shapes can be cut with a tile saw and/or nippers. Only nibble small bits of tile at a time.

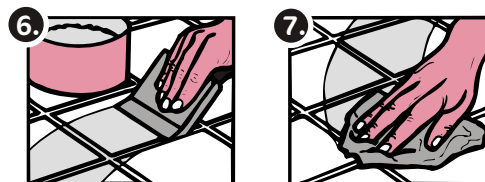
8. In awkward locations it is often easier to apply the wall adhesive on to the back of the tile instead of the wall. For complicated shapes use cardboard to make a template and transfer the design to the tile.

9. On edges and external corners, a neat finish can be achieved by fitting tile trim at the time of tiling. To prevent the seepage of water around baths and basins, a plastic sealing strip and silicone sealant should be used.

10. In bathrooms, we also recommend the use of silicone seal instead of grout in the corner wall joint where the shower is located.

GROUTING

Force the grout into the joints (see fig. 6) using a grouting float or squeegee. Do not use steel or hard rigid spreaders as these can cause scratching to certain glazes. Remove surplus grout from the surface and 'peg' the joints with a rounded stick to achieve an even finish. Polish with a dry cloth (see fig. 7). Grout looks dry quite quickly, but needs around 14 days to properly cure. Do not allow grout to become wet until fully cured.



worktop tiling

CHOOSE THE RIGHT TILES

Tiles for worktops should be thick enough to withstand the expected wear and tear. Shiny, high-gloss wall tiles are not normally suitable.

FIXING

The worktop should be rigid and stable. On chipboard worktops, prime with Acrylic Primer and fix with Flexible Floor Adhesive.

GROUT

Strictly speaking, you should use 2-part Epoxy Grout for grouting worktops. However, Epoxy Grout is often difficult to use and many people prefer to use normal, Wide Joint Grout & Flexible Additive, with a Grout Protector to help reduce staining. This will not give the same performance as Epoxy, but is considerably easier to apply.

floor tiling

PREPARATION

Good preparation makes for an easy job, so take your time and plan ahead.

CONCRETE FLOORS

Dry, bare concrete floors are ideal for ceramic tiling and require no priming. New concrete must be at least six weeks old and thoroughly dry. The surface must be smooth, flat and free from dirt and grease. The smoother the concrete the easier the tiling, so use a levelling compound over rough floors if required. Some painted concrete floors can react with tile adhesive and are not normally suitable for tiling.

TILING ONTO VINYL TILES (on concrete)

Existing vinyl tiles must be free of grease, polish etc., and firmly adhered to the subfloor. Prime with Acrylic Primer before tiling.

TILING ONTO EXISTING GLAZED & UNGLAZED TILES

Existing tiles must be clean, grease free and firmly adhered to the subfloor. When tiling onto glazed tiles, a flexible additive should be used with the adhesive and grout for improved adhesion.

WOODEN FLOORS

Existing wooden floors must be rigid, stable and capable of supporting additional load without flexing and have sufficient ventilation beneath them. There are two basic methods to follow:-
Wooden floors normally require covering with sheet plywood - not hardboard - to reduce any risk of movement (ceramic tiles do not bend). Minimum 10mm (3/8") exterior or marine plywood should be screwed

floor tiling continued

grid fashion at 200mm (8") centres and every 150mm (6") along the edges. Then prime with Acrylic Primer and tile as normal, adding Flexible Additive into the adhesive and grout. Alternatively, special flexible floor adhesive can be used to tile directly onto unsealed floor boards. Grout with Flexible floor grout.

NOTE: If there is any doubt about the suitability of tiling onto your floor, you should consult a professional. 'Floating' chipboard floors should be examined by a professional to ensure they are suitable for tiling.

FLOORING ADHESIVES

Working and drying times vary according to the weather, but the following should give you an idea of what to expect:
Rapid Set floor adhesive has a working time of approximately 30 minutes and can be walked on after about 6 hours.
Normal Set floor adhesive has a working time of approximately 2 hours and can be walked on after about 24 hours.
For other adhesives, refer to the manufacturers instructions.

LAYING OUT OF TILES

1. If possible, remove all fixtures as tiling will raise the floor level
2. Mark a chalk line on the floor down the centre of the room, parallel with the most suitable wall (normally this is achieved by viewing the room from the doorway). Before applying the adhesive, lay out a row of tiles in each direction to check the fit and avoid ending up with small cuts.

CUTTING TILES

Floor tiles are generally harder to cut than wall tiles and we suggest you use a professional tile cutter, available for sale or hire from Brooke Ceramics.

FIXING TILES

1. Using a notched trowel or spreader, spread tile cement to a depth of 4 - 12mm, depending on the tile. Comb the adhesive with a notched trowel ensuring that continuous parallel ribs of adhesive are formed. Do not mix & spread more cement than you can fix in 20 minutes.
2. Fix dry tiles immediately by pressing them into position with a slight sliding or twisting action. When laying floor tiles it is important to ensure that no air spaces are left beneath the tiles.
3. Use tile spacers to achieve a uniform joint size and help maintain 'squareness'.
4. Every 5 or 6 tiles, use a spirit level or straight edge to ensure that all tiles are laid flat. Lift any proud or sunken tiles and add or remove adhesive before the adhesive has started to set.

GROUTING

When the tile adhesive has dried, force grout between the tiles with a grouting float or squeegee and remove any surface grout. Finally, polish with a clean dry cloth.

MAINTENANCE

A quality ceramic floor should give many years trouble-free service with very little maintenance. Grit is the biggest enemy and a mat well adjacent to external doors is strongly recommended.

hardness & durability of glazed floor tiles

The durability of glazed floor tiles is measured by counting the number of rotations of an abrasive wheel needed to break through the glaze and expose the base clay.

The grades are known as PEI grades:

PEI Grade 1 Wall tiling only
PEI Grade 2 Walls & some Domestic Bathroom floors



PEI Grade 3

Average domestic use i.e. Conservatory or bathroom



PEI Grade 4

All Domestic use & Medium Commercial Use



PEI Grade 5

All Domestic & Heavy Commercial

frost proof & frost resistant

The resistance of ceramic floor tiles to frost damage depends on the water absorbancy of the clay in the biscuit or body:

All 'Porcelain' Totally Frost Proof
Most 'White' Clay Frost Resistant to about -10 degrees Centigrade
Most 'Red' Clay Frost Resistant to about - 5 degrees Centigrade

choose the right glazed floor tile

Home use	3	4	5
Bathrooms & Toilets <small>For very light traffic bathroom floors, PEI Grade 2 can be used</small>	+	+	+
Conservatory & Dining Rooms	+	+	+
Kitchens, Hallways & Entrances		+	+
Outside Porch & any other outside use		+	+
Commercial use			
Light to Medium Commercial use		+	+
Medium to Heavy Commercial use (Pubs, Take-aways, etc)			+

tiling tips⁺

- + Always comb the adhesive onto the wall or floor - do not "dot and dab" the back of the tiles.
- + When tiling walls, leave a small gap of around 3mm in the corner to allow for movement and fill with a bead of silicone.
- + Marble, slate, unglazed porcelain and quarry tiles should be sealed before grouting.
- + When preparing wooden floors, never use hardboard.
- + Know where you are finishing before you start.

free adhesive + grout what is it worth?

with every 7 sq metres (approx 9 sq yds) of wall tiles you receive 15 kg adhesive + 3.5 kg grout **worth £13.98**

14 sq metres is worth £27.96

21 sq metres is worth £41.94

28 sq metres is worth £55.92

and so on

with every 5 sq metres (approx 7 sq yds) of floor tiles you receive 20 kg adhesive + 5 kg grout **worth £15.98**

10 sq metres is worth £31.96

20 sq metres is worth £63.92

30 sq metres is worth £95.88

and so on

open

Monday-Friday 8-8, Saturday 8-6, Sunday 10-4

for more information visit

www.tile.co.uk

IMPORTANT NOTE

Advice is given by Brooke Ceramics Ltd and their representatives in good faith and for general guidance only. Since we are unable to check every installation, it is your responsibility to ensure correct materials and procedures are used.